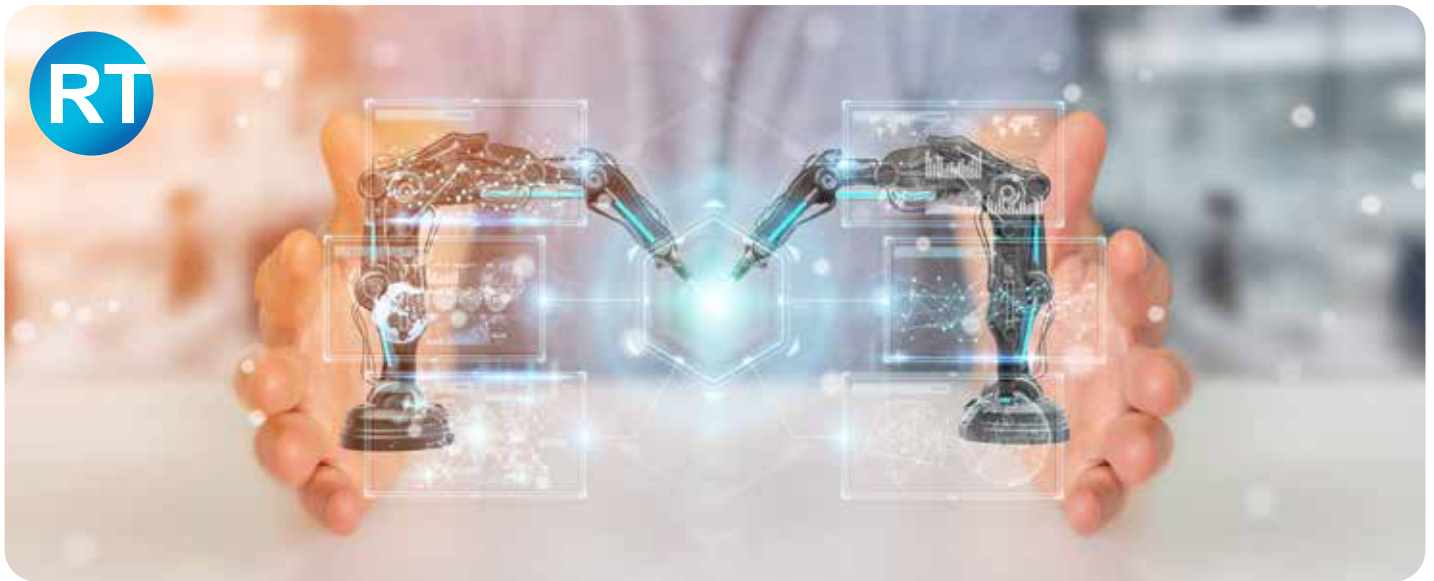


Control Systems and Contract Manufacturing



Design • Build • Commission • Service

From concept to design, manufacturing to after-sale service, we offer a wealth of mechanical, electrical, and software expertise to address your unique challenges. No one covers the globe with more reliable, innovative, creative products and services than RT.

Control Systems

We provide control systems for numerous industries and motion control applications. Additionally software engineering expertise is offered to program systems according to your specifications. Our 24 hour field service team ensures initial start up and future support to power productivity and reduce down time.

Key Features:

- Nidec, Allen Bradley, and Yaskawa certified
- UL508A Shop
- Complete systems documentation
- Backed by 24/7 field and phone support

Contract Manufacturing

We build to your unique specifications, letting you focus on your daily production goals while we're assembling machines and controls that allow you to respond to market and customer demand as efficiently as possible.

Key Features:

- Clean Room Applications Assembly Area
- Flow waterjet precision cutting
- In-house design, assembly, and testing
- 25,000 sq ft state of the art machine shop facility

Industries

Paper & Film
Plastics & Manufacturing
Printing and Bindery
Textile and Apparel
Food and Beverage
Aerospace and Defense
Energy and Utilities
Pharmaceutical
Biotechnology
Medical Devices
Automotive and Motorized
Tools & Machinery
Metals Manufacturing
Chemicals

Applications

Web Handling
Wire & Cable
Inspection Automation
Testing Automation
Custom Assembly
Material Handling
Linear Motion Control
Rotary Motion Control
Packaging
Palletizing
Laser Marking
Extruder Heat Control
HVAC Control

Technologies

Take-Ups & Pay-Offs
Traversing
Drawing
Twining & Stranding
Insulating & Jacketing
Caterpullers
Capstans
Extruders
Dancer Assemblies
Length Measuring
Ink Jet & Roll Printing
Barcode Reading
Mass Flow Meters
Hipot Testing
Pressure Leak Testing



RT Engineering Corporation is a leading Northeast provider of custom industrial controls, automation, and factory modernization solutions. With understanding of the production challenges manufacturers face, RT extends a wealth of mechanical and electrical engineering expertise, component distribution via leading suppliers, and 24/7 field support. Founded in 1972, RT strengthens U.S. Companies by designing, manufacturing, and servicing advanced machines and motion control systems that power productivity and reduce downtime.