



RT Engineering

is a leading provider of custom industrial controls, automation and factory modernization solutions. Founded in 1972, RT strengthens US manufacturers by designing, building, installing and servicing advanced machines and motion control systems that power productivity and reduce downtime. With understanding of the production challenges manufacturers face, RT extends a wealth of mechanical and electrical engineering expertise, product distribution via leading suppliers, and 24/7 field support.



Contact Us!
With any questions about
our capabilities or projects

One Kenwood Circle
Franklin MA, 02038

800.343.1182
sales@rteng.com

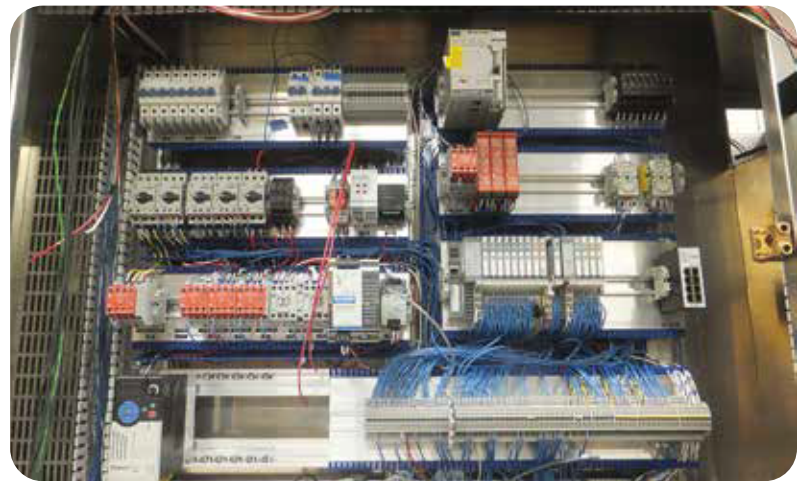
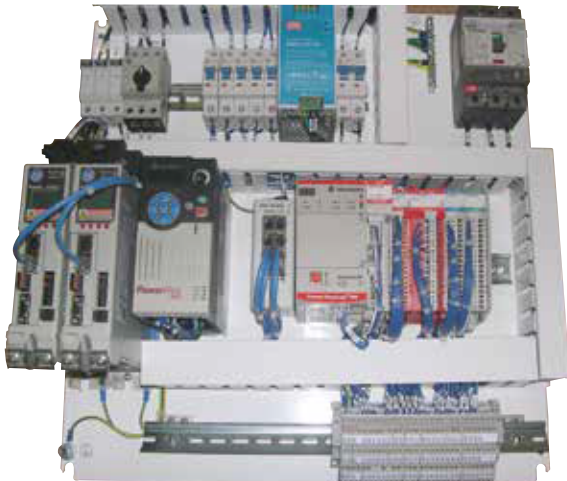
Engineered Systems

Once the initial scope is determined, RT will formulate a detailed system description and generate a proposal for your approval. RT's design and programming engineers will then generate schematics and program the specified drives, PLC's, HMI's or industrial PC's. Finally, our test engineers will perform point-to-point verification and a final test with power to confirm that proper connections are made and all control functions are performing to specifications.



OEM Control Panels

Are you tasked with maintaining optimum operations and output levels yet lack the labor force to take on new process control projects rising from changing production requirements? RT Engineering provides OEM panel solutions at cost effective prices. We use the materials and products you need! Our in house electrical and mechanical engineers, and ever growing panel shop will guarantee you a successful product with on time deliveries.



Contract Manufacturing

With RT's contract manufacturing abilities, we can manufacture your product/project for less cost. We can build per your prints or we can engineer the entire project. With our UL508A panel shop, you can be assured that we have all of the qualifications to complete your job.

From start to finish we pride ourselves on completing your project on time. Unlike other contract manufacturing facilities, we do not outsource your project to other companies or countries. If you choose to partner with RT, you can be assured that your project will be completed at our corporate and production location in Franklin MA.

We have experience with several different types of projects, these include but are not limited to: controls systems and panels, manufacturing of small machines, cable assemblies and much more. We can back these claims with success stories from many different customers and project types.



Industrial Part Supply

We deliver value-added expertise to help you source industrial components. From the latest AC products, which include servo and vector drives and motors to simple warning lights, RT Engineering's product specialists are dedicated to delivering your ideal solution at a competitive price. We pride ourselves on creating long-term relationships and work hard to earn your trust everyday.



Some of our manufacturers include but are not limited too:

ABB - Baldor

Carotron

Control Techniques

Marathon Motors

MTE

Patlite

Yaskawa

Please see full line card for complete list

Custom Automation

RT Engineering specializes in the design and build of high-throughput assembly systems for a wide array of industries. Using synchronous, asynchronous palletizing, and linear transfer systems, RT engineers precise and repeatable machines and assemblies that can be reconfigured to meet changing production demands. RT automation engineering features Cartesian and SCARA robots and servo driven manipulators with optional inspection testing or labeling.

Key Advantages of Automation

Improve Efficiency: Streamline trouble areas that drain resources.

On-Demand Machine Shop: React quickly to demand by leveraging RT's 25,000 sq. ft. and expanding machine shop.

Maintain a Competitive Edge: Build that one-of-a-kind differentiator regardless of resource constraints.

Address Regulations Quickly: Comply rapidly with changing production regulations.



Field Service

Whether facing a costly disruption or seeking preventative maintenance, RT Engineering provides unparalleled field support to keep your lines running and give you a competitive advantage. With 24/7 field service, RT deploys our factory-trained engineers that are experienced in many product lines, to make your problems disappear.



Our Field Service options, include but are not limited to:

- Industrial Control Problems
- Preventative Maintenance
- Free Machine Audit
- Spare Factory Parts
- Training
- Start-Up
- & More

Please see our field service documents for further details